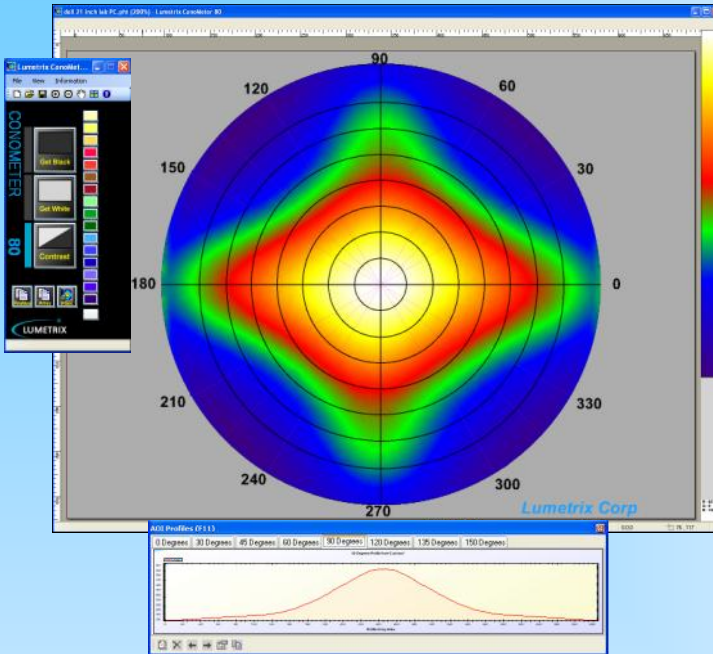


ConoMeter 80

Viewing Angle Photometer



- ◆ Fast Measurements of Luminance & Contrast
- ◆ Cost Effective
- ◆ Viewing Angle > 80 Degrees
- ◆ Compact

Easy to use and cost effective, the ConoMeter[®] 80 is ideal for measuring the viewing angle luminance, contrast of emissive displays such as LCD, plasma, OLED, FED and rear-projection displays. The system is well suited for use in QC, production process control and R&D.

Using Lumetrix's Electronic Bracketing, the system can reliably measure displays from 0.01 to over 100,000 cd/m² without the use of neutral density filters. Very high luminance dynamic range and high contrast ratios are also measurable.

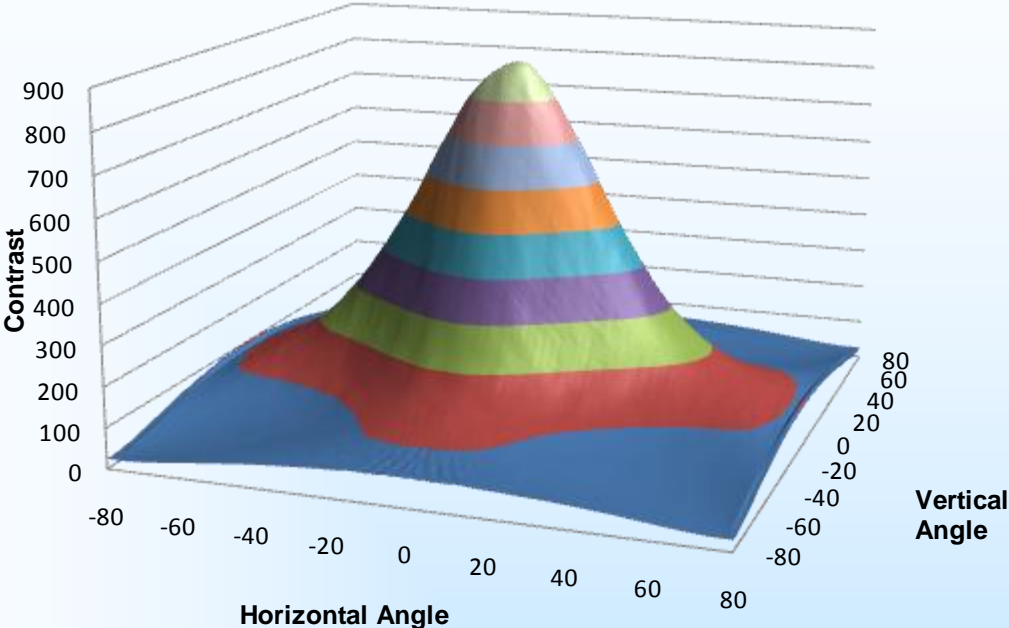
The ConoMeter's optical system has fewer and smaller optical elements than complex conoscopic (Fourier) lens systems. The ConoMeter has inherently low scatter and low retro-reflection. The direct view approach of the ConoMeter facilitates easy and accurate display alignment.

The ConoMeter software includes easy to use features for acquisition, analysis, reporting and exporting. More extensive analysis and display options are available by inclusion of the Photometrica[™] analysis software.



Measurement Capabilities	Luminance (cd/m ² ,fL) contrast ratio
Viewing Angle	> 80 degrees
Luminance (>50:1 S:N)	.01 to >100,000 cd/m ²
Dimensions	10 x 10 x 6 cm
Weight	450g
Power Requirements	2W
Mounting	1/4"-20 threaded mount
Computer Interface	IEEE-1394b
Electrical Compliance	CE and FCC Part 15 Class A
Warranty	2 years
System Requirements	XP/Pro, IEEE-1394 Interface

Contrast Surface Plot



Viewing Angle Vs. Spot Size

